



EDUCATION **MADE ACTIONABLE**



3000+
schools
as partners



1000
schools taking
test regularly



3,50,000+
test taking
students

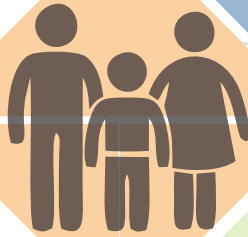


13
years of
experience





WHAT IS ASSET ?



Provides comprehensive diagnostics and a dashboard view of students' academic performance

Scientific test driven by research



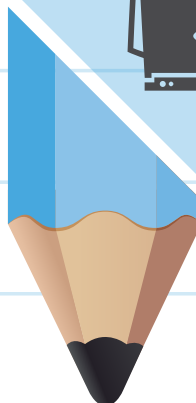
Tests in 5 subjects
Focused on higher order skills

Subject	3-10	5-10	4-8
English	✓		
Math	✓		
Science	✓		
Social Sciences		✓	
Hindi			✓

A benchmark to gauge strengths and areas of improvement



National Test Dates:
Summer Round: 3rd - 6th Aug, 2015
Winter Round: 7th - 10th Dec, 2015



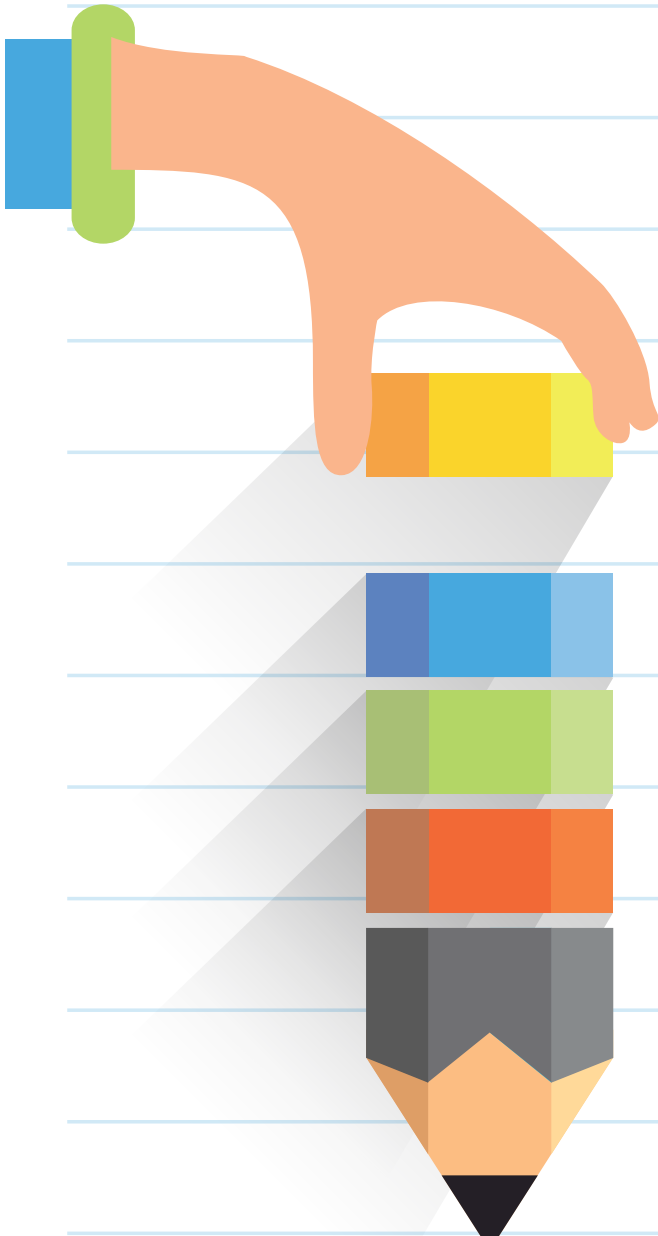


WHY ASSET ?

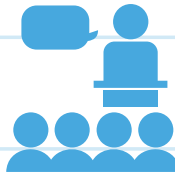
ASSET helps identify both generic and specific gaps.

It consolidates, analyses and presents student performance assessments.

It suggests actionable insights into what each student is adept at learning.



Measure
the clarity of
conceptual understanding



Gauge
the impact of teaching



Track
class-wise progress



Assimilate
data into actionables



Benchmark
schools across metrics



WHAT IS THE EVALUATION PROCESS?

Addresses the need to be able to identify specific areas where a student's performance has shown inconsistencies

Presented in the form of comprehensive reports with actionable data

The report includes teacher as well as student centric comprehensive reports - called the **Teacher MyBook*** & the **Student MyBook***, respectively

*TEACHER MYBOOK REPORTS

- Personalised Teacher Feedback (For his/her class)
- Student Performance Table
- Year by Year Analysis
- Skill-Based Summary
- Analysis of Easy/Difficult Questions

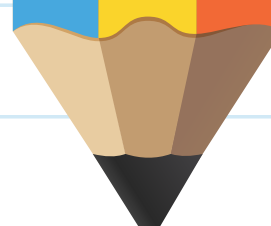
*STUDENT MYBOOK REPORTS

- Personalised Student Feedback
- Circular Skill Profile
- Skill Based Summary
- Score Card
- Practice Questions and Explanations

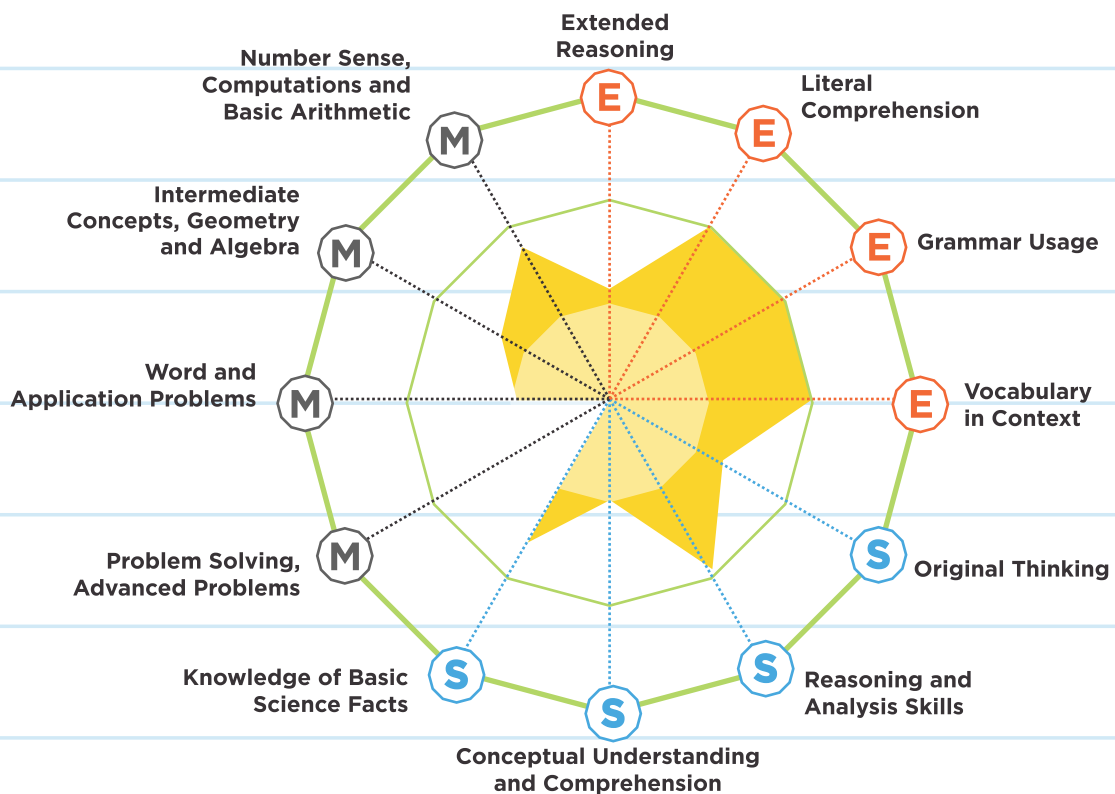
The in-depth analysis, within the reports, is structured and presented in an easy to understand format



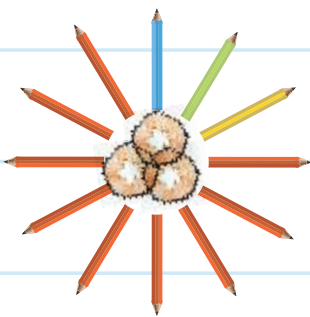
The colour-coded format of the reports, helps organise the data easily and makes browsing for it effortless



INSIGHTS FOR STUDENTS



ACTIONABLE ASSISTANCE



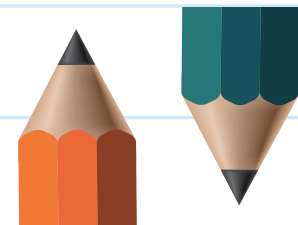
CIRCULAR STUDENT SKILL PROFILE

Presents skills based on 12 comprehensive skill nodes in English, Math and Science.



SCORECARD

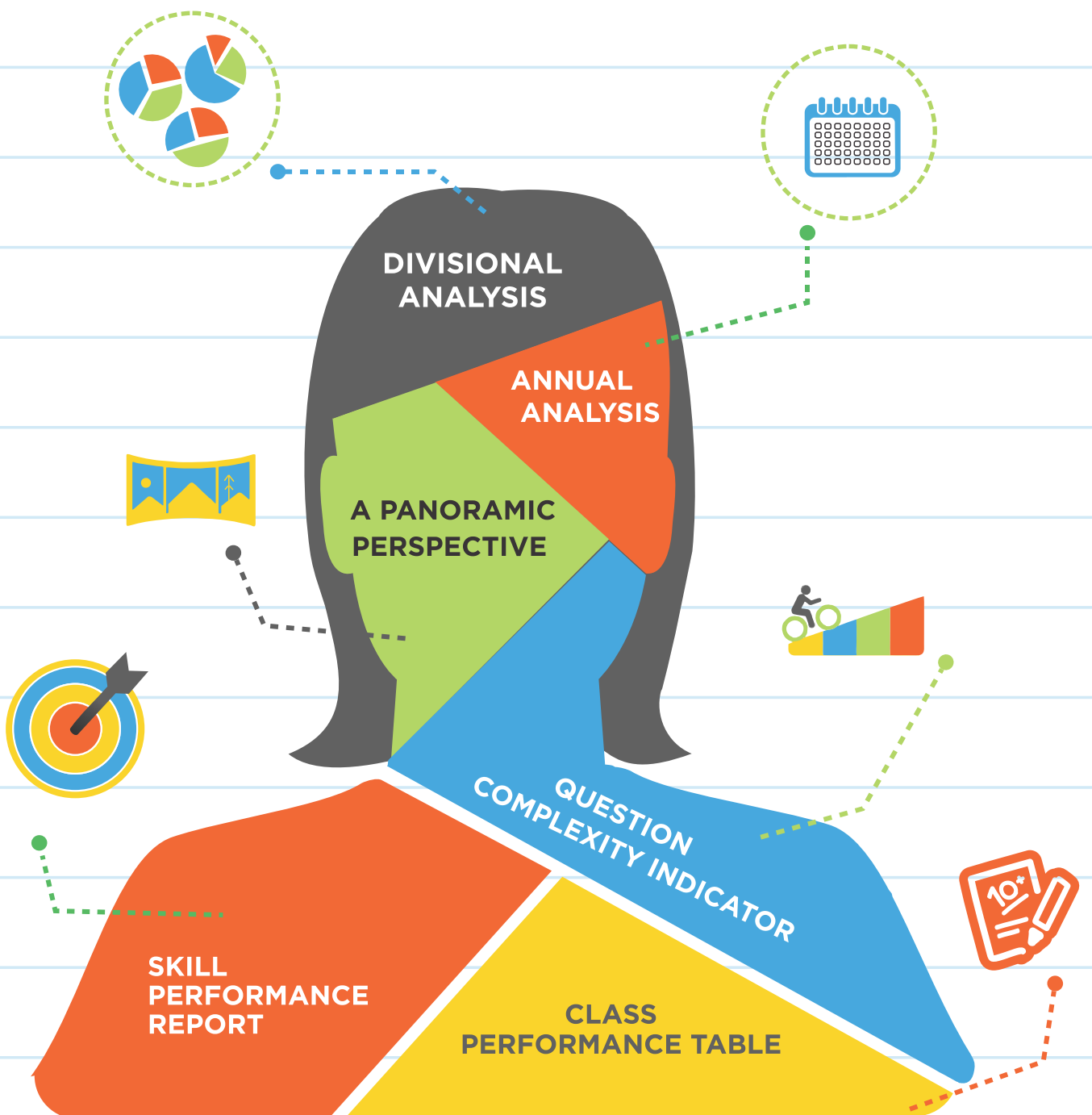
Details remedial pointers based on objective questioning.



STRENGTHS & WEAKNESSES ANALYSIS

Highlights strengths and weaknesses to synthesise insights on students' progress.

INSIGHTS FOR TEACHERS



INSIGHTS FOR MANAGEMENT



Below National Average



Within Average Range



Above National Average



Class	English	Math	Science	Students
3	99%	102%	100%	72
4	98%	103%	105%	77
5	99%	96%	103%	63
6	103%	106%	107%	62
7	111%	111%	112%	35
8	122%	121%	125%	28
9	120%	120%	131%	33
10	118%	124%	123%	31

Bird's eye view: An overall look at the school's performance.



Significant Degradation:
More than 7% decrease



Significant Improvement:
Greater than 7%



Status Quo Maintained
Change by 3% (+ or -)



Degraded: Between
3% to 7% decrease



Improved: Between
3% to 7% increase

Class	English	Math	Science	Students 2013	Students 2014
5	0%	-4%	-9%	66	33
6	-3%	-6%	-14%	41	44
7	-11%	-20%	-10%	55	41
8	-21%	-8%	-25%	34	23
9	8%	-14%	8%	29	25
10	30%	-10%	30%	24	21

Year-on year analysis: The report shows whether the school's performance has improved over the years.





AWARDS & RECOGNITION

FOR STUDENTS

Every student participating in ASSET is awarded a certificate. Students who perform exceptionally well in the tests are recognised for their commendable achievement and are given an award, so as to inspire them to achieve academic excellence.



FOR SCHOOLS

To recognise the schools and ASSET Coordinators' efforts to promote the vision of 'learning with understanding' among their students by implementing ASSET, the following awards would be given away after the end of each round

- Certificate of Recognition for Schools*
- Certificate of Recognition for ASSET Coordinator

* On registering for ASSET before

15th May, 2015



CATEGORY & RECOGNITION

Trophy

Certificate



English Subject Topper for classes 3 - 10



Math Subject Topper for classes 3 - 10



Science Subject Topper for classes 3 - 10



Social Studies Topper for classes 5 - 10



Hindi Topper for classes 4 - 8



Each Subject Top 1% Students

A Certificate of Outstanding Performance



Overall Top 1% Students

A Certificate of Outstanding Performance



Overall Next 5% Students

A Certificate of Distinguished Performance



Overall Next 10% Students

A Certificate of Creditable Performance



WHAT KIND OF SUPPORT IS PROVIDED?

POST ASSET SESSION

They help teachers better understand the ASSET results.

These are 3 hour sessions for schools, which have registered for ASSET 2015.

More than 600 students are already a part of the Summer Round/Winter Round.



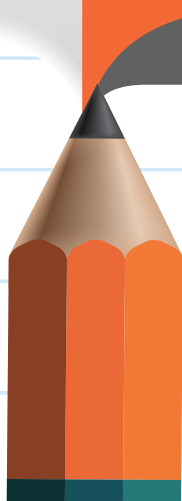
3 hours

ENHANCEMENT OF TEACHER ASSESSMENT SKILLS (ETAS)

ETAS helps teachers get an intuitive sense of students' thinking, helping them avoid misconceptions in classrooms. Teachers predict the performance of students and the ASSET team gives them feedback, which helps them build their assessment skills.

Eligibility:

- ▶ Any full class for all subjects will be eligible
- ▶ SS and Hindi - included
- ▶ Logins must be created by teachers
- ▶ ASSET student responses (OMRs) must be received by EI





WHAT IS DUKE TIP ASSET TALENT SEARCH?

A collaboration between Duke University Talent Identification Program (Duke TIP) and Educational Initiatives.

Dedicated to identify, acknowledge and support academically talented 7th & 8th graders.

Eligibility

95↑ or above percentile in English, Math or Science during the current or previous ASSET tests



Support

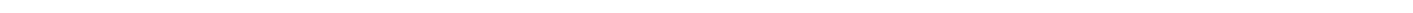
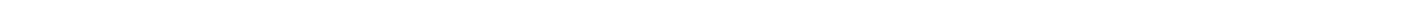
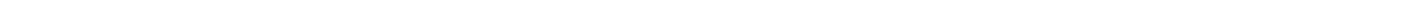
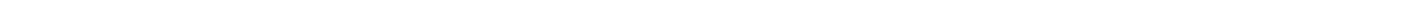
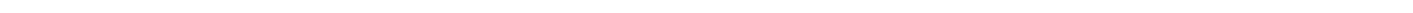
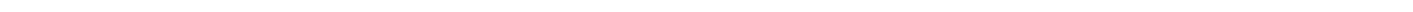
Special publications and online resources to assist and enhance their talent

Duke Summer Studies Program (SSP)
Three weeks of exploring, learning and honing academic skills

ASSET Talent Scholars
Top performers will be recognised as ASSET Talent Scholars and will receive special zone - wise recognition.

Added Opportunities





CONTACT US: Visit <http://www.ei-india.com/asset/>
You can also contact us on our toll free number: 1800-102-8885
(Monday - Friday: 9:00 am to 6:00 pm IST)

